

ENCLOSED THERMAL SYSTEMS



Compact-THERM
7-ft x 9-ft enclosed skid

EQUIPMENT FEATURES

You won't find this kind of quality anywhere else! SOIL-THERM Enclosed Systems are the finest quality, hardest working, most energy efficient thermal remediation systems on the market! Here are some of the key features of these systems:

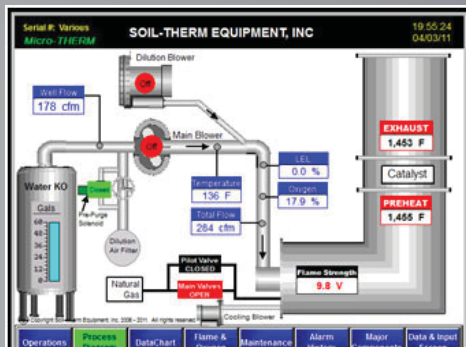
Space Saving Design: Our small equipment sizes fit into very small enclosures. These systems are sharp looking, quiet, and are good neighbors when your site is close to residents or schools.

Energy Efficient Burner Technology. Our award winning, patented *Jet-THERM* burner will lower your fuel bill. *Jet-THERM* burners are extremely low NOx.

Powerful Touchscreen. The 8" Color touchscreen provides complete status of operation, troubleshooting guide and optimizing tips, and datalogging to a 1GB data memory card. Brilliant graphics!

Stainless Steel Vapor Piping & Water KO. Stainless steel prevents rusting, internal piping degradation, and ensures long equipment life.

Quality Construction: When it comes to quality, SOIL-THERM is the leader. Premium components, careful attention to code and details, and excellent designs proven over 22 years of service.



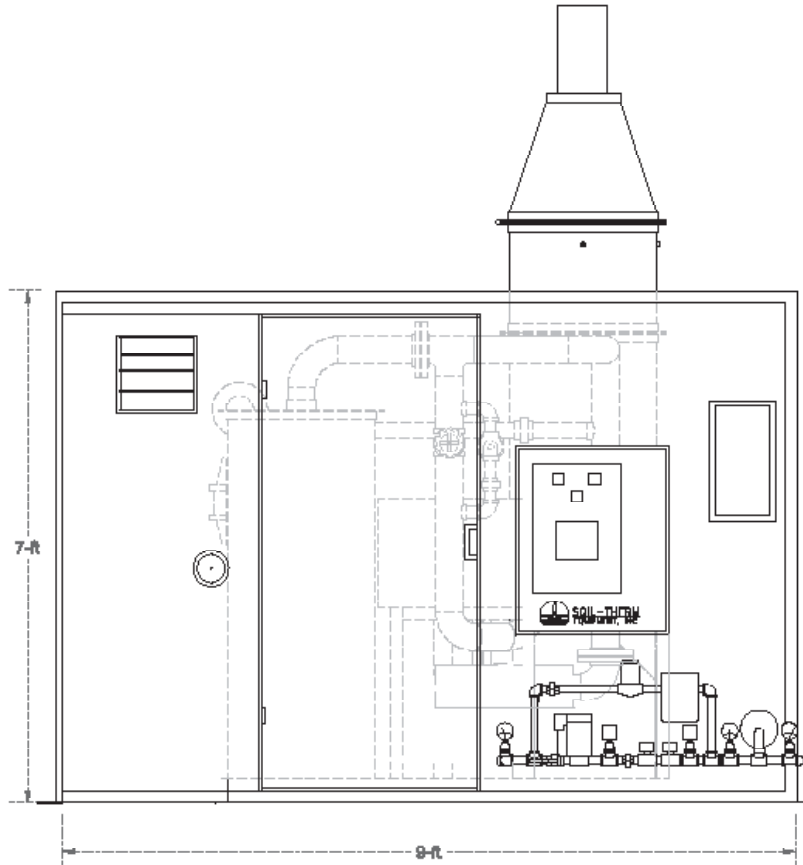
SOIL-THERM
EQUIPMENT, INC.

5310 Derry Ave, Unit C
Agoura Hills, CA 91301-4509
(818) 706-2145 FAX (818) 706-2145

www.soiltherm.com

ENCLOSED THERMAL SYSTEMS

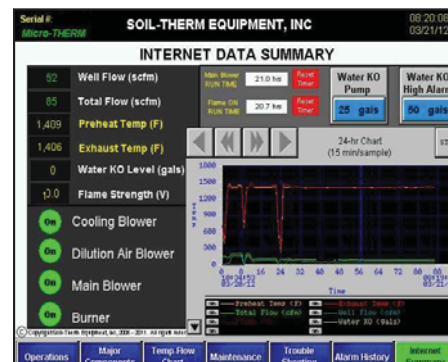
Each **CUSTOM THERMAL** Enclosed System features a complete locking enclosure for a powerful 500 scfm thermal/catalytic SVE oxidizer system. Everything is mounted on this system to begin SVE operations!



Equipment Specifications

VOC Processing: to 12,000 ppmv
 Destruction Efficiency: >99%
 VOC's /hour (max): 110 #/hour
 Size: 7-ft x 9-ft x 13-ft (H)
 Weight: ~8,000 lbs
 Well Vapor Connect: 4"

Electrical: 230VAC, 3-phase, 60Hz, 100A
 (phase converters available)
 Natural Gas: 3/4", 750 cfh @ 2-5 psig supply
 Propane: 3/4", 350 cfh @ 2-5 psig vapor
 Stack Height: 13-ft



SOIL-THERM
EQUIPMENT, INC.

5310 Derry Ave, Unit C
 Agoura Hills, CA 91301-4509

www.soiltherm.com (818) 706-2145 FAX (818) 706-2145