

Mobile-THERM Treatment Systems



Mobile-THERM
SVE and Dual Phase Oxidizer



Mobile-THERM Premium Deluxe
SVE, Dual Phase, Air Stripper, OW-Sep, 900 cfm Thermal/
Catalytic Oxidizer, Generator, 300 gals Propane



Mobile-THERM
SVE & Air Stripper w/ Oxidizer

EQUIPMENT FEATURES

Mobile-THERM systems are the ultimate in high quality mobile treatment system technology! Each system is integrated into a deluxe locking enclosed trailer. These systems are built for fast, discrete, high performance mobile extraction operations.

Trailers: Select from a wide range of trailers from 15' to 25', with optional features.

Enclosure: Enclosures feature locking roll-up doors and double swing doors on the end. Premium construction and noise attenuating heavy walls provide security and quiet operation.

SVE Extraction Blowers: Select from a wide range of SVE blowers including regenerative, positive displacement, and dual stage regenerative blowers to 20" Hg.

Dual Phase Extraction: A wide range of DPE blowers include water seal and oil seal liquid ring pumps and three stage regeneratives for 20+'' Hg vacuums.

GW Treatment & Air Strippers: A wide range of options are available for air strippers, oil water separators, filters and more.

Generator and Electrical Controls: **Mobile-THERM** systems come complete with Nema 4 control panel and PLC with touch-screen operator panel

Jet-THERM Burner: Stainless steel, high performance burner makes the oxidizer small and powerful.

OPTIONS

- Propane or Diesel Generator
- Dual Phase Blower (oil sealed, liquid ring)
- Catalyst with Fold-Down Stack
- Internet Access Telemetry & Control
- On-board Water Storage Tank
- LEL and Oxygen Sensors
- Stake Bed and Open Trailer Systems



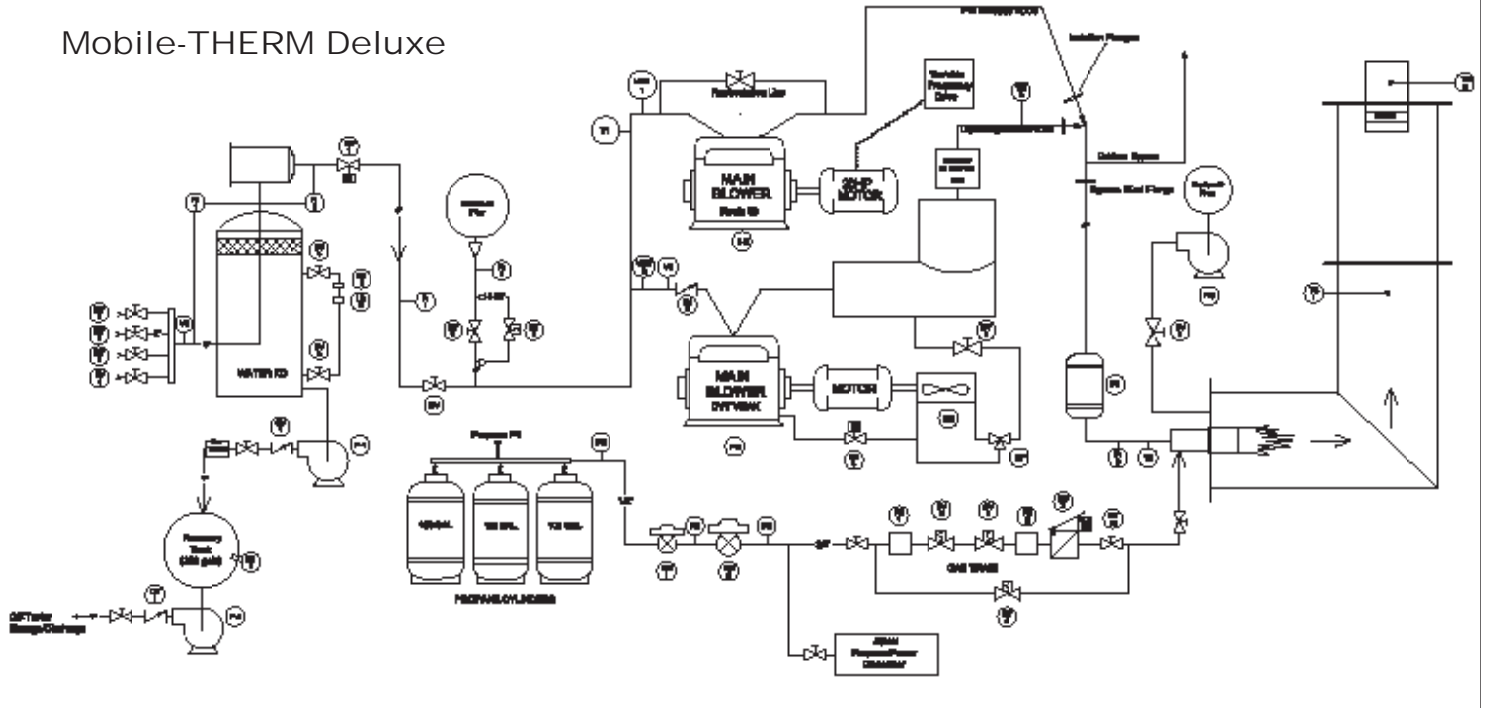
SOIL-THERM
EQUIPMENT, INC.

5310 Derry Ave, Unit C
Agoura Hills, CA 91301-4509
(818) 706-2145 FAX (818) 706-2145

www.soiltherm.com

Mobile-THERM Treatment Systems

Mobile-THERM Deluxe



Equipment Specifications

VOC Processing: to 14,000 ppmv
 Destruction Efficiency: >99.9%
 VOC's /hour (max): 160 #/hour
 Size: 8-ft x 18-ft x 13-ft (H)
 Weight: 10,000 - 20,000 lbs
 Well Vapor Connect: 4 - 2" vapor inlets
 Dual-Phase Blower: to 700 cfm, 28" Hg
 SVE Blower: to 800 cfm, 14" Hg
 Air Stripper Process: to 25 gpm
 OW Separator: 5 - 25 gpm
 Water Storage: to 250 gallons

Electrical: 45 kW Generator (propane or diesel) or external hookup
 Natural Gas: External hookup available
 Propane: 3/4", 50-500cfh @ 2-5 psig vapor
 Stack Height: 13-ft

Approvals: UL 508A Certified Control Panel
 SCAQMD Certified Permit
 CSA Special Field Evaluations



**SOIL-THERM
 EQUIPMENT, INC.**

5310 Derry Ave, Unit C
 Agoura Hills, CA 91301-4509
 (818) 706-2145 FAX (818) 706-2145